

Child Health

Objective 3.1 Developmental Screening Initiatives

Contact: Jaquita Clark, Jaquita.Clark@ks.gov

REPORT – October 2021 through September 2022

Becoming a Mom (BaM): The Title V supported BaM program has integrated education and promotion of developmental screening. While developmental milestone related content has been an ongoing component of Session 5 on Infant Care, it has also recently been incorporated into the new Session 7, which convenes in the postpartum period. Postcards promoting the CDC Milestone Tracker App and website resources are provided to participants during the session. Guidance and resources were provided to BaM sites during the November 2022 in-person TA session for a January 2023 launch of Session 7.

Development Milestone Cards & Passports: Title V continued to disseminate the [Developmental Milestone and Activity Postcards](#) and [Developmental Screening Passports](#) previously created through the Early Childhood Comprehensive Service (ECCS) grant for MCH programs' use with families. The 21 Developmental Milestone Postcards contain developmental milestones provided by the CDC and age-appropriate activities promoted by [Vroom](#). The cards are shared with families to start a conversation about a child's development and to encourage a fun learning experience at home. The Developmental Screening Passports are helpful tools for families in tracking the number of developmental screenings their child received. These resources can be downloaded from the [Kansas Help Me Grow website](#).

Title V and the Kansas Early Childhood Developmental Services (Part C) Program is collaborating to update the Milestone Cards to align with CDC's updated milestone by age checklist. Title V is also using the CDC's handouts, especially the promotional flyer for the Milestone Tracker App, while resource updates are made.

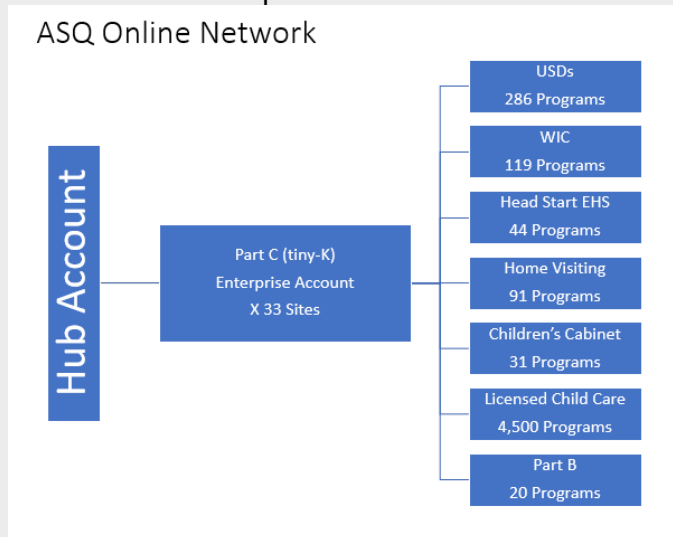
The Children and Families Section Director and MCH Program Consultant developed and distributed an order form containing several different educational materials available at no cost to Aid-to-Local grantees from several programs including Family Planning, Pregnancy Maintenance Initiative, Teen Pregnancy Targeted Case Management, and Maternal Infant Early Childhood Home Visiting. The materials assist the grantees in providing screening and educational services to their clients. Developmental milestone cards and child development screening passports were included on the form. Several copies were mailed to grantees upon request.

Developmental Milestone Cards and Passports are used regularly by the KS-SHCN and Bridges care coordinators to help families with ideas for engaging with their young children and to monitor their developmental screening scores and screening timelines.

Healthy Child Development Programs: Title V continued promotion of early literacy programs such as the American Academy of Pediatrics' Turn a Page, Touch a Mind; the Dolly Parton Imagination Library; and other interactive activities recommended by Learn the Signs, Act Early Campaign, with local MCH programs, home visiting programs, and healthcare providers. Title V continued to encourage other partners across the state to incorporate more early literacy and age-appropriate activities that help children develop healthy habits into their services. Through successful promotion, the Kansas Children's Cabinet and Trust Fund has included

information about Dolly Parton’s Imagination Library and 1-800-CHILDREN at the top of the main page on their [website](#).

Utilizing Statewide ASQ Data: Title V, in partnership with other state agencies, entered into an agreement with Brookes Publishing to establish a statewide ASQ Enterprise for alignment of statewide data. This agreement now consolidates multisector development screens into one statewide hub account. Below is an image of the multi-sector structure that will be in place.



Technical assistance is provided to local MCH agencies on how to access the statewide ASQ Enterprise and guidance for documentation of developmental screenings and referrals into the shared data measurement system, DAISEY.

Local MCH Agencies:

- Barton County Health Department provided education and referrals for developmental screening in conjunction with lead screening appointments for 73 clients. They distributed the Developmental Screening Passports and Milestone cards provided by KDHE.
- Lawrence-Douglas County Health Department met their goal of engaging 75% of families in Kansas Early Childhood Developmental Services when developmental screening revealed the need for support. 100% (10/10) of children with an identified delay were referred to services (5 were referred to Kansas Early Childhood Developmental Services, 1 was referred to Head Start since the child was over the age of 3 years, and 2 were referred to their pediatrician for continued follow up). Additionally, all 10 children were still engaged with support services at the time of this report.
- Leavenworth County Health Department completed 72 well-child visits which included an ASQ-3 completed by the caregiver. MCH staff used the ASQ-3 to discuss concerns and make referrals for any children with delays. In addition, 146 other developmental screenings were completed.
- Marshall County Health Department completed 46 Kan-Be-Healthy physicals which encompassed 138 procedures, including 34 ASQ-3s, blood lead, hemoglobin, vision and hearing screenings.
- Rooks County Health Department provided developmental screenings to 67% of children receiving a well child exam. This was a 4% increase from their baseline of 63%. 64 children ages 1-11, were screened at a well child exam using Bright Futures guidelines (Pre-visit Questionnaire, Parent Handout, and Nutrition Questionnaire), Denver Development and/or Ages and Stages tools with appropriate referrals made at time of visit. MCH staff members gave families information on OneCare Kansas in order to improve outcomes for the families. All families were given a community resource list at their visit. Prior to each MCH visit or immunization visit, the clerk or RN check the child's status for immunizations, KanBeHealthy /well child/preventative care, and insurance coverage.

PLAN – October 2023 through September 2024

Development Milestone Cards & Passports: The Bridges Care Coordinators will continue to use the developmental Milestone Cards & Passports with all families on the Bridges program. The milestone cards are great tools for families to understand ways to engage with their child in developmentally appropriate play, while the passport help families track their child developmental progress by providing a document to record ASQ screenings at different age intervals. This document can then be shared by the parents with a variety of partners working with the child.

Early Childhood Systems & Collaboration: In January of 2023, the Kansas Governor shared an executive order to establish an Early Childhood Task Force to review and assess the early childhood systems in Kansas. Part of this order called for an independent agency to review all early childhood systems in Kansas and make recommendations for better alignment. During the next year, Title V programs that focus on early childhood will be working to provide information to the selected independent agency evaluating Kansas Early Childhood systems to see what is working well, but also identifying gaps and barriers that need to be addressed to create a seamless system for families. Based on findings from the review, the Title V early childhood programs will work collaboratively to implement the recommendations.

Local MCH Agencies:

- CareArc will assess 25% of child clients between 9 and 35 months for developmental milestones using the Ages & Stages Questionnaire 3 (ASQ-3). The current ASQ-3 screening rate is 16.7%. They've begun educating front desk and clinical staff on the use of ASQ-3 and meet monthly to assess progress on goals so this increase in screening is achievable.
 - Community Health Center of Southeast Kansas (CHC-SEK) will assess 100% of their child clients for developmental needs. This will be done in conjunction with the well-child visit according to the Bright Futures EPDST. To reach school-age children who don't typically see their doctor unless they're ill, MCH staff will work with CHC-SEK's Population Health staff who have access to the Medicaid data base to identify those children who haven't had a well-child visit and contact them for an appointment. They will assist with transportation and translation if needed. They will provide screening in the community at Kindergarten Roundups, Head Start Enrollment and four Back-to-School events.
 - Franklin County Health Department will ask the parents/guardians of at least ten children to complete and ASQ-3 as part of the well-child visit. This is a new activity for the small health department as they will be hiring an APRN to complete well child visits.
 - Greeley County Health Department will provide ASQ-3 and ASQ-Social Emotional (SE) for infants at ages 2-, 4-, 6-, and 12-months during immunization appointments, as well as at 18 and 48 months. Their measurable goal is to score 20 ASQ-3 and 20 ASQ-SE by the end of the program year. In addition, 100% of children with a score that indicates further need, will be referred to community partners such as Greeley County Health Services, Russell Child Development Center, or the client's primary care physician.
 - Labette County Health Department will increase their rate of ASQ-3 screening for children ages 9-35 months from 70%-85%. They will begin having the parent complete the ASQ-3 at check in to ensure it is not missed due to time constraints once the appointment starts.
 - Pottawatomie County Health Department will provide ASQ-3 and ASQ-SE to 100 children during the program year. The assessment will be completed during each immunization visit that coincides with an ASQ screening point.
-

Your input matters!

Give feedback on this domain and others by completing our feedback survey.

[Give Feedback!](#) >



KANSAS
MATERNAL &
CHILD HEALTH