

## What is *Help Me Grow*?



*Help Me Grow (HMG)* is a unique, comprehensive, and integrated statewide system designed to address the need for early identification of children at risk for developmental and/or behavioral problems, and the linkage to developmental and behavioral services and supports for children and their families in Kansas.

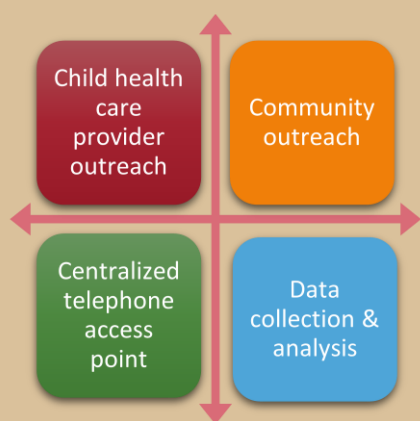


## What benefits does *Help Me Grow* offer?

- Improve access to services for children at risk
- Encourages collaboration across sectors
- Lower societal cost
- Successful linkages
- Statewide system that is integrated, comprehensive, and effective
- Quick assistance for families
- Strengthen early childhood system
- Stronger partnerships/silo reduction



## *Help Me Grow* 4 Components



## How *Help Me Grow* works

*Help Me Grow* does not provide direct services but it is a system developed to improve access to existing resources and services for children and families.

Through comprehensive physician, community outreach, centralized information, referral centers, patients, and families are lined with needs programs and services.

Currently, 23 states are *Help Me Grow* affiliates...  
**Kansas** can be the next one!

